

28<sup>TH</sup> EUROPEAN GOJUKAI KARATE DO GASSHUKU 2013



THE NETHERLANDS

20th - 25th July 2013



# Content

*Introduction*

*Schedule*

*Location & Transport*

*Park Pagedal*

- *Map Park Pagedal*
- *Pagedal Events Centre*
- *Impression Park Pagedal*
- *Accommodation & Costs*



# Introduction

On behalf of the Dutch branch of IKGA Europe it is a great pleasure to invite you to the 28th IKGA European Gasshuku. We are very pleased to inform you that the event will be held in the city of Stadskanaal and that we have been able to book the venue at the prestigious sport side of Park Pagedal on the 20th - 25th July 2013.

Again we are very glad and proud that this Gasshuku will be held under the guidance of :

**Saiko Shihan Goshi Yamaguchi Hanshi**      President of JKGA and IKGA.

**Hanshi Ingo de Jong**      Vice president IKGA  
Bloc Director of IKGA Europe  
Shibucho of Scandinavia.

*They will be assisted by other prominent Shihan.*

## Registration & Payment

Registration is possible until 31 January 2013. Registration can only be done by the shibucho / representative of a country.

Deposit of € 100,- per participant until 31 January 2013 (not refundable).  
The rest of payment until 15th of April 2013,  
according to participant's accommodation.

Note: It is not allowed to join the seminar without making use of the provided options



# Proposed Schedule of Events

Saturday 20th	Sunday 21st	Monday 22nd	Tuesday 23rd	Wednesday 24th	Thursday 25th
Arrival & Registration Official opening Ceremony Training all together Dinner	Breakfast Training Lunch Training Shihan training Dinner	Breakfast Training Lunch Training Shihan training IKGA meeting	Breathing training Breakfast Training Lunch Training Shihan training Dinner	Breakfast Training Lunch Training Dan Grade Examinations Dinner Sayonara party	Breakfast Training Demonstrations Grading tests announcements Closing ceremony

*\*The schedule can be modified*

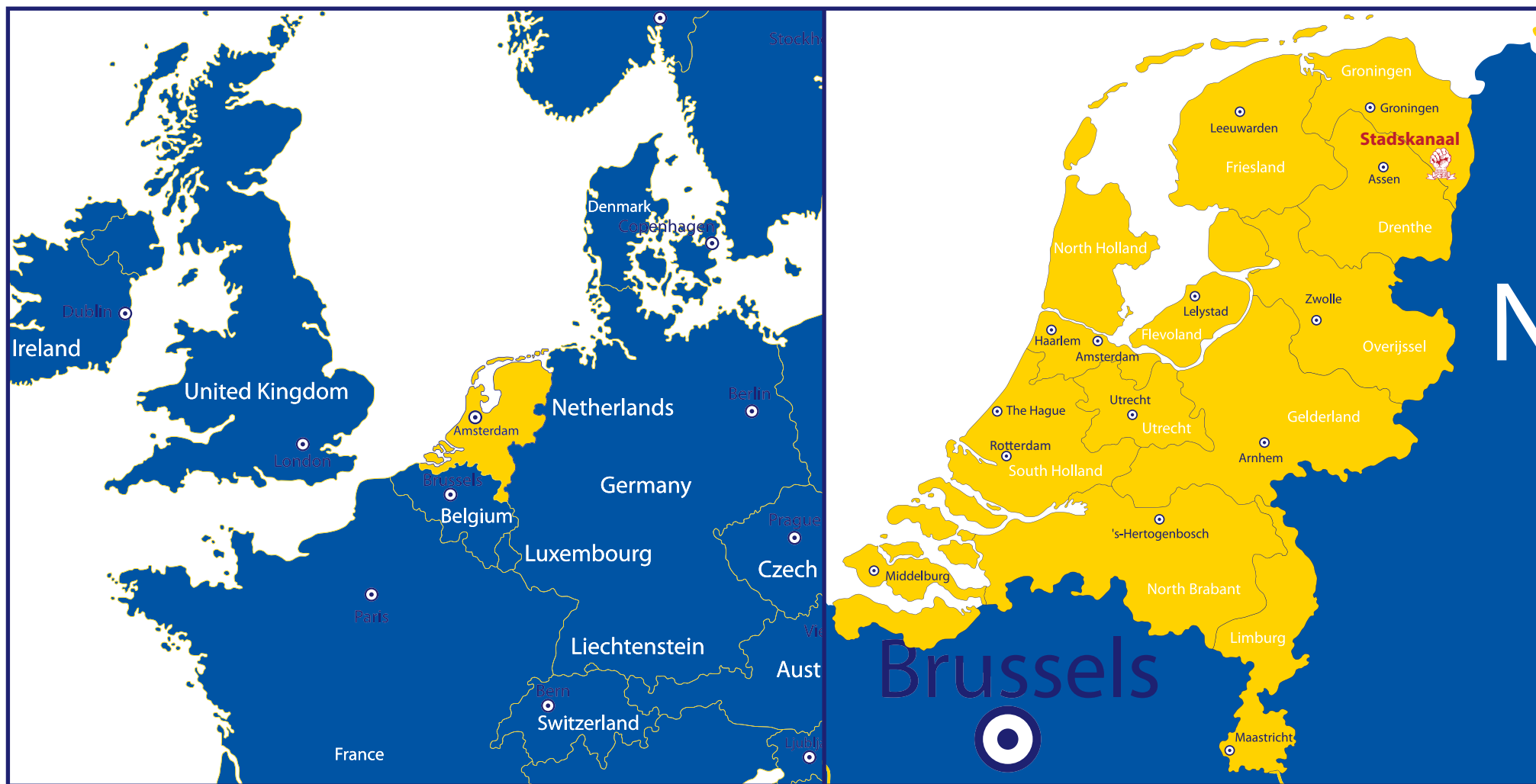
Please note that during this 28th Gasshuku special attention will be given to children.

For all children (***also who aren't participating in the program above***), a special program will be arranged including youth training and nice sports activities and games besides these trainings. However, this will only be possible if we have sufficient participants.

Registration in advance is necessary; please use the digital form and return it before 31 January 2013.



# Location & Transport



**Address Park Pagedal**  
Hoveniersweg 1  
9502 BW Stadskanaal  
The Netherlands  
[www.pagedal.nl](http://www.pagedal.nl)

## **Transport from Amsterdam Schiphol to Stadskanaal**

- Car Rental: <http://www.bbcarrental.nl/>
- Schiphol Travel Taxi: <http://www.schiphol.nl/Travellers/ToFromSchiphol/SchipholTravelTaxi.html>
- Public Transport: <http://9292.nl/en>

# Park Pagedal

*On the border of the two provinces Drenthe and Groningen, surrounded by 700 hectares of natural landscape, you will find Park Pagedal.*

*The park is located on the outskirts of the city of Stadskanaal. The park offers many facilities, sports fans can have fun. There are sports courts available where you can play volleyball, tennis or squash. There is also a fitness center and swimming pool. Guests of Pagedal can make free use of it. The area has many cycling and walking trails.*

## ***The surrounding area***

Park Pagedal is an ideal base to explore amongst others the Fortress of Bourtange and the Hondsrug hills. The park is also situated close to the Regional Historic Center, the Star Historic Railway, the village of Borger and surrounding boglands.

Within half an hour's car ride Zoo Emmen, with its famous butterfly garden, can be reached and also such places as the Ter Apel-monastery, Westerbork memorial, the "Blue-Town" area and across the German border Dankern castle with its beautiful gardens.

In Stadskanaal is a large choice of shops and small restaurants; each Saturday the large streetmarket of Stadskanaal is being held, selling for example lots of regional products. There is the Geert Teis Theater; a cinema located at about 100 meters away.

## ***Family holiday***

If members of your family are not participating in the Gasshuku, they will still have a very good time! Because of its outstanding leisure facilities, leafy surroundings and a region with a rich cultural history Park Pagedal is also an ideal place for family holidays in which to sport, relax and enjoy the local surroundings.

Children can even participate in the special youth program with youth trainings, sports activities and games.



# Map Park Pagedal

- 1 Sports & Rooms Centre
- 2 Pageborg
- 3 Recreation Zone
- 4 Apartments
- 5 Water Villas
- 6 Camping Site
- 7 Parking Area
- 8 Bunch



# Pagedal Events Centre

- 4000 m<sup>2</sup> events floor
  - indoor tennis courts (2300 m<sup>2</sup> / 4 courts)
  - sports hall (1700 m<sup>2</sup>)
- 6 meeting rooms (up to 150 persons)
- swimming bath
- squash
- fitness / wellness
- bar / restaurant
- free use of internet (wifi)



# Impression Park Pagedal



# Accommodation & Costs

	Accommodation with full board	Seminar fee	Total costs p.p.	Non- trainees p.p.
<b>Option 1: Apartment for 1-2 persons *</b>				
A Single	€ 405,-	€ 100,-	€ 505,-	€ 405,-
B Double (p.p.)	€ 340,-	€ 100,-	€ 440,-	€ 340,-
<b>Option 2: Bungalows for 3-5 persons</b>				
A Triple (p.p.)	€ 315,-	€ 100,-	€ 415,-	€ 315,-
B Quadruple (p.p.)	€ 290,-	€ 100,-	€ 390,-	€ 290,-
C Quintuple (p.p.)	€ 275,-	€ 100,-	€ 375,-	€ 275,-
<b>Option 3: Bungalows for 6-8 persons **</b>				
A Sextuple (p.p.)	€ 290,-	€ 100,-	€ 390,-	€ 290,-
B Septuple (p.p.)	€ 280,-	€ 100,-	€ 380,-	€ 280,-
C Octuple (p.p.)	€ 270,-	€ 100,-	€ 370,-	€ 270,-

\* There is a limited amount of apartments for 1 or 2 persons. If you want to use an apartment you can subscribe to one of these, but we can't guarantee that your request will be granted. The system used to adjudge the bungalows will be: first pay off initial deposit, first served.

\*\* In the 6 to 8 persons bungalows is slightly more luxury.

## All accommodations are included with

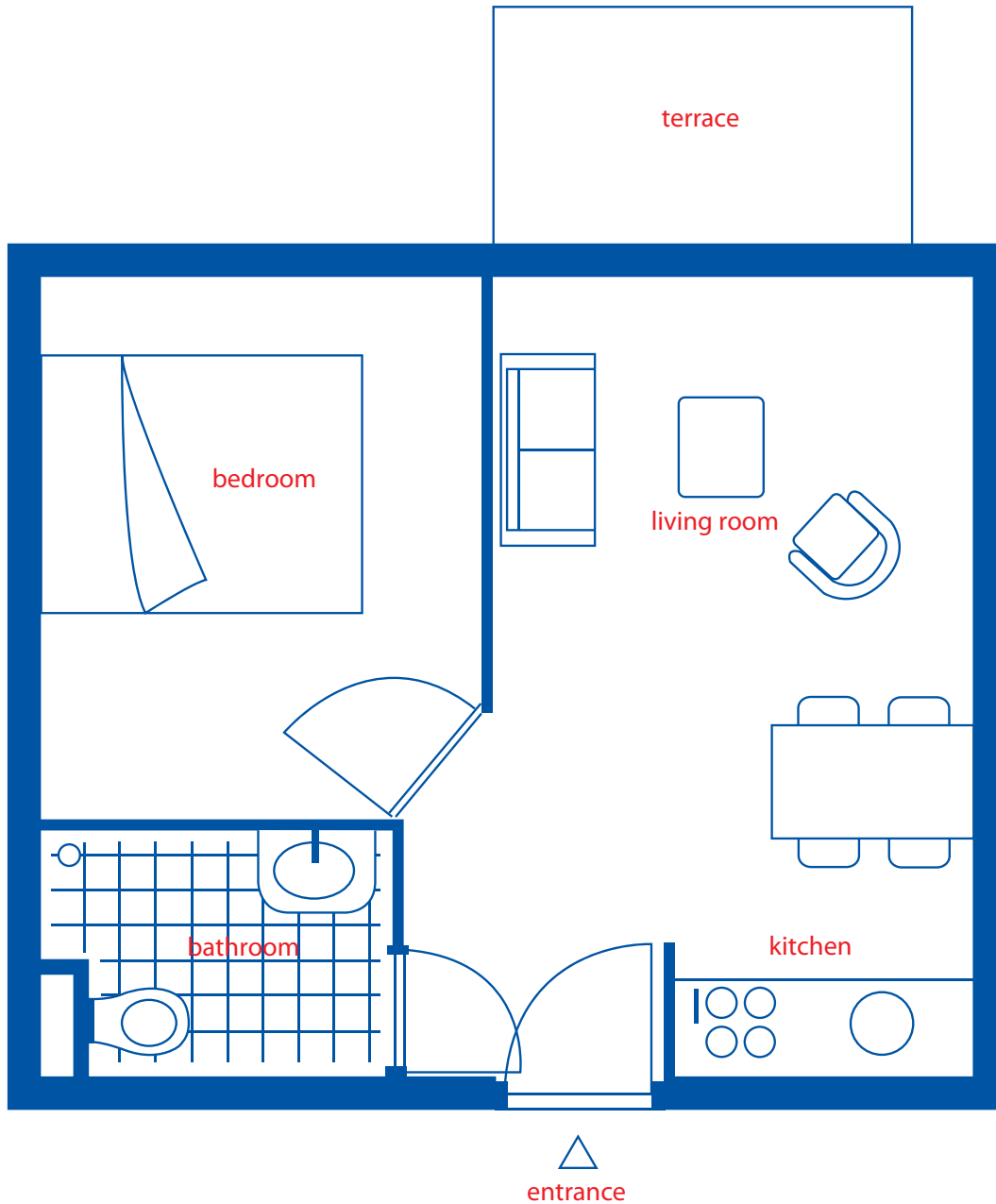
- modern kitchen with dishwasher
- non-smoking
- free use of internet (wired)
- no pets

## COSTS

<b>Included</b>	<ul style="list-style-type: none"> <li>• Accommodation</li> <li>• Meal 3 times a day (buffet)</li> <li>• 3 packets of towels (packet: 1 big/1 small towel)</li> <li>• 1 linen package</li> <li>• Seminar fee</li> </ul>
<b>Not included</b>	<ul style="list-style-type: none"> <li>• € 10 IKGA fee (pay in cash during the seminar)</li> </ul>

# Apartment for 1-2 persons

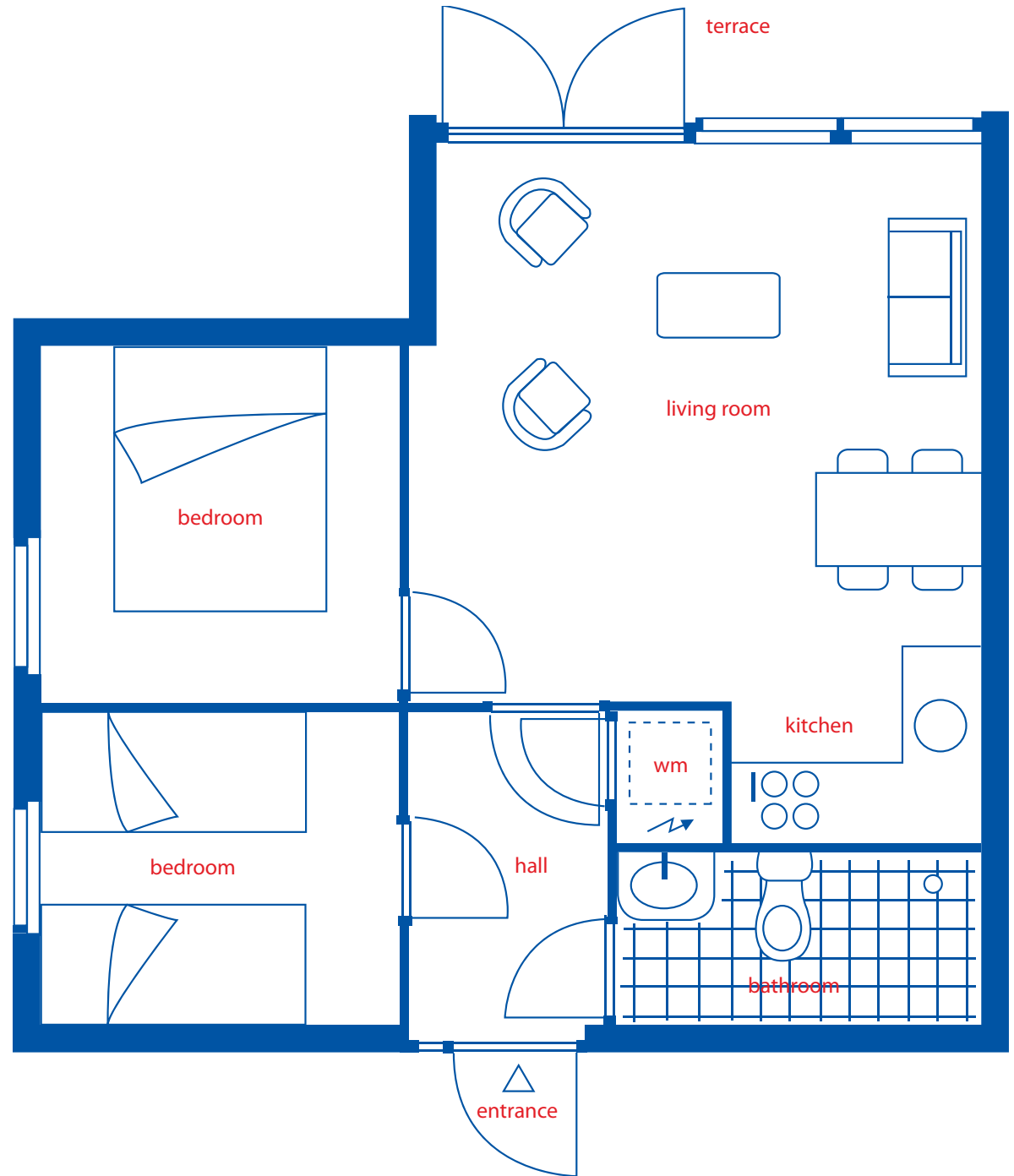
*The double bed can be separated.*



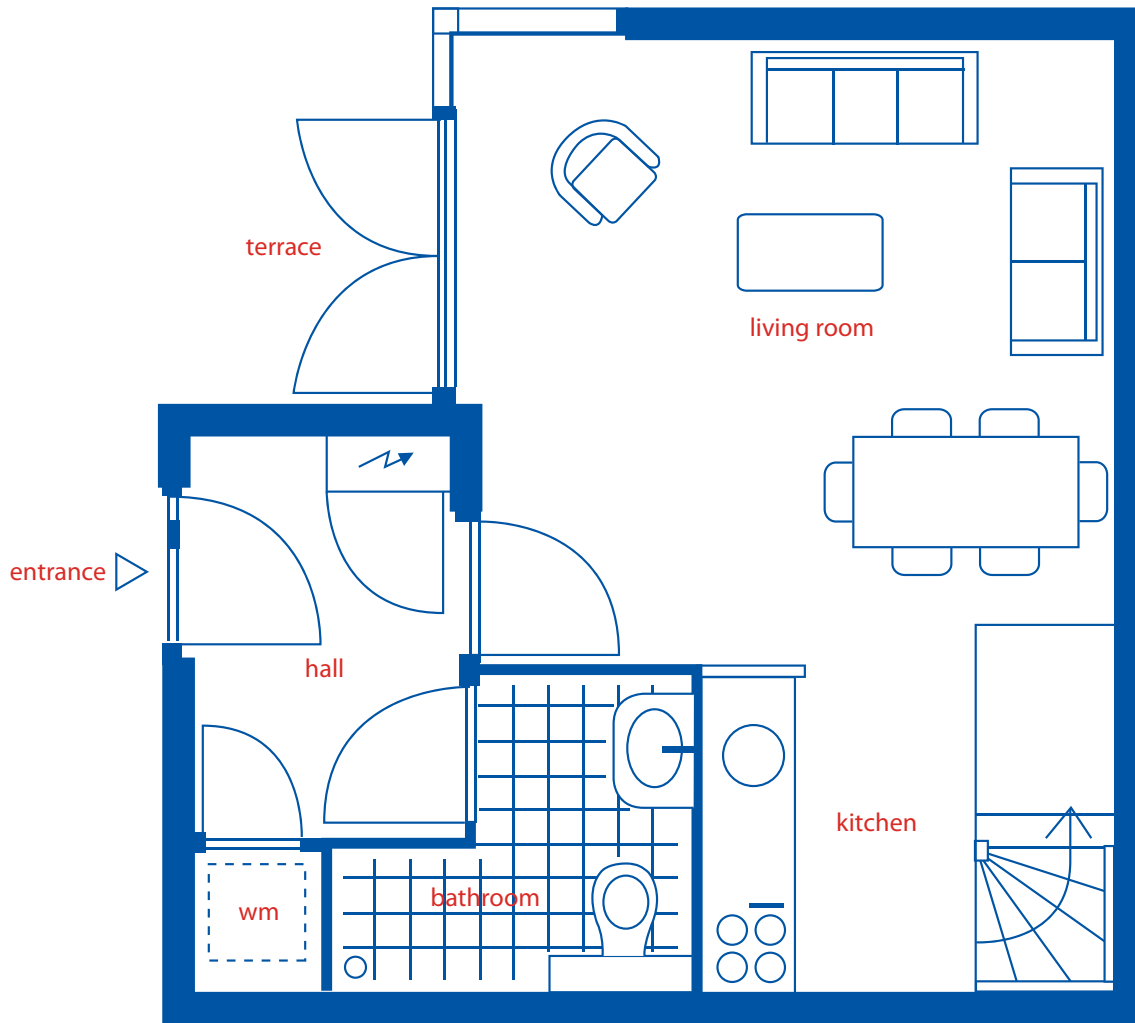
# Bungalow for 4-5 persons

*The double bed can be separated.*

*There are bunk beds present*



# Bungalow for 6-8 persons

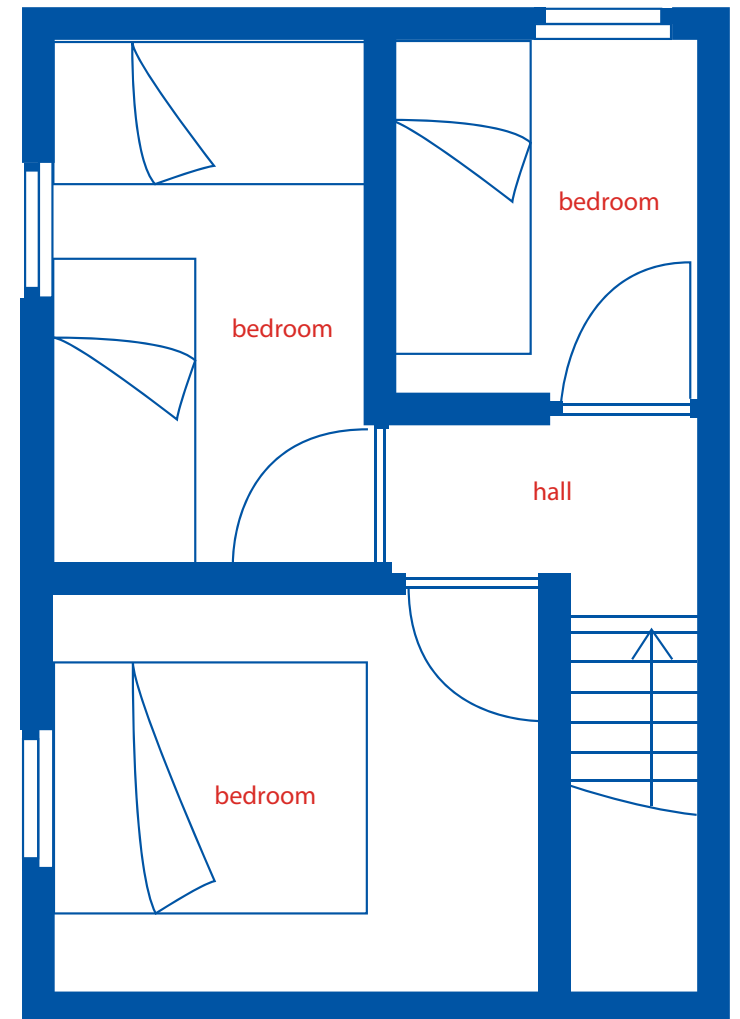


GROUND FLOOR



# Bungalow for 6-8 persons

*The double bed can be separated.  
There are bunk beds present*



**FIRST FLOOR**



**THE NETHERLANDS**

*We hope to see you in 2013*

[www.ikgaeuropeangasshuku2013.nl](http://www.ikgaeuropeangasshuku2013.nl)

*available from November 2012*